



FALL ARMYWORM LIFE CYCLE (IN LATIN AMERICA)

The Fall Armyworm (*Spodoptera frugiperda*) is an insect pest that can feed on more than 80 crop species and may cause significant yield reduction on major cultivated cereals such as maize, rice, sorghum, and also to legumes, vegetable crops and cotton, if not managed.

It is native to the tropical and subtropical regions of the Americas and has become established in many countries across Africa since it has been first detected in early 2016.



© Martin E. Rice

PUPAL STAGE

8-30 days

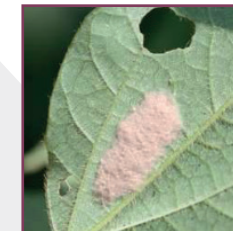


Adult female lives an average of 10 days (up to 21 days).



EGGS

Eggs are laid in masses of 50-200 eggs.



Eggs hatch in 2-3 days

LARVAL STAGE

(6 instars): 14-22 days



The female moth of the fall armyworm can lay up to a total of 1 000 eggs in her lifetime. It can have several generations per year (depending on the temperature).